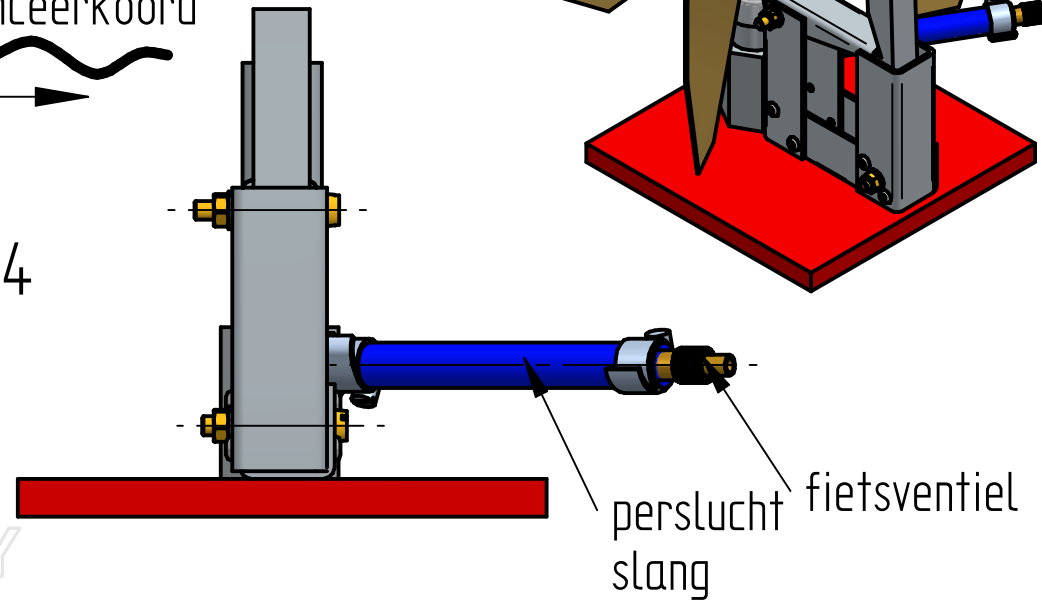
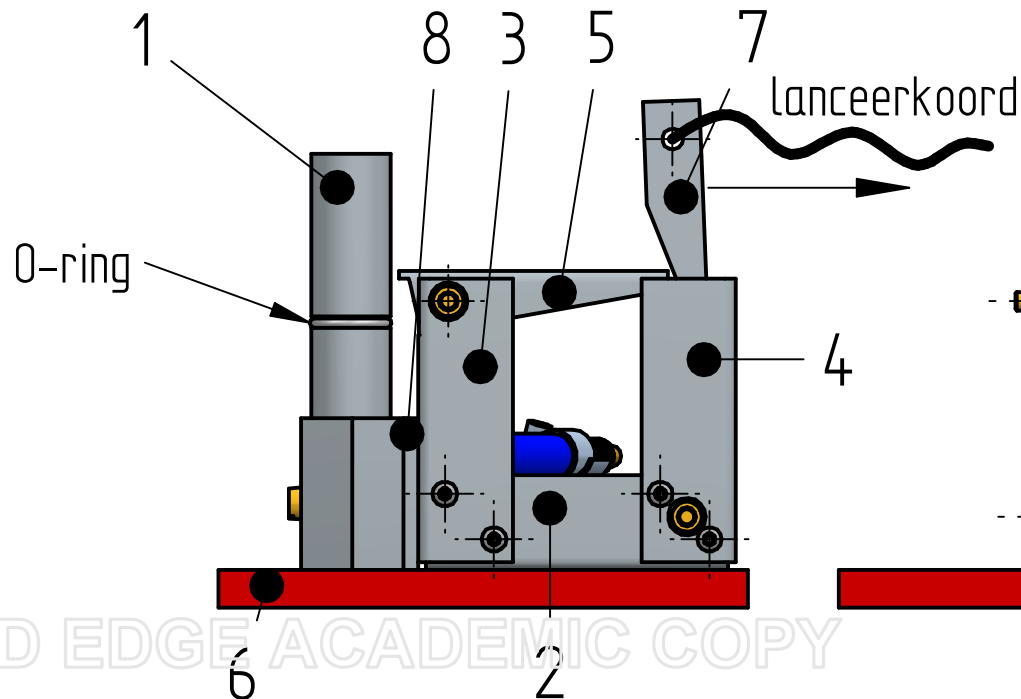
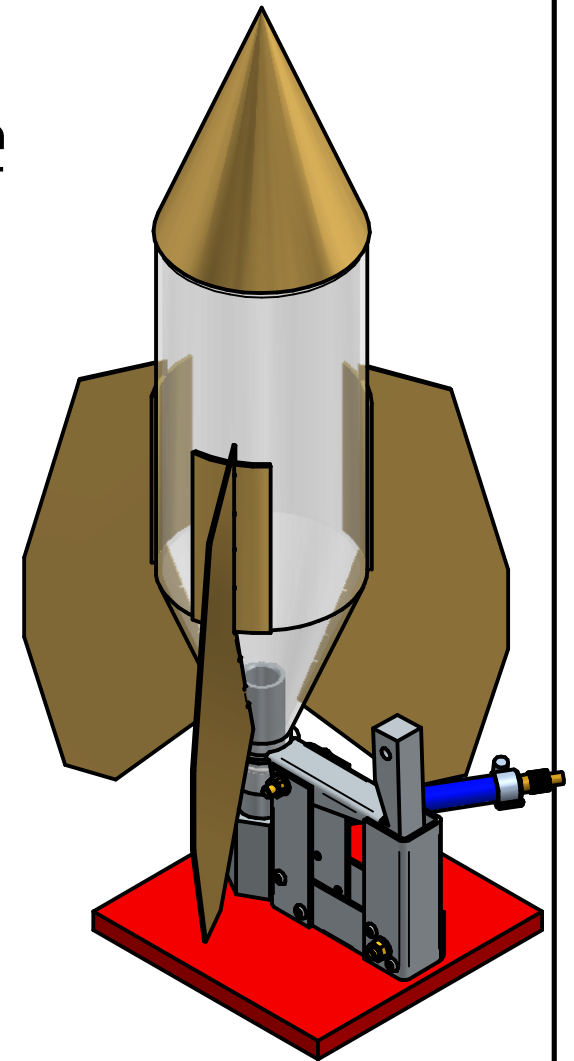


Druk gedeelte  
waterraket

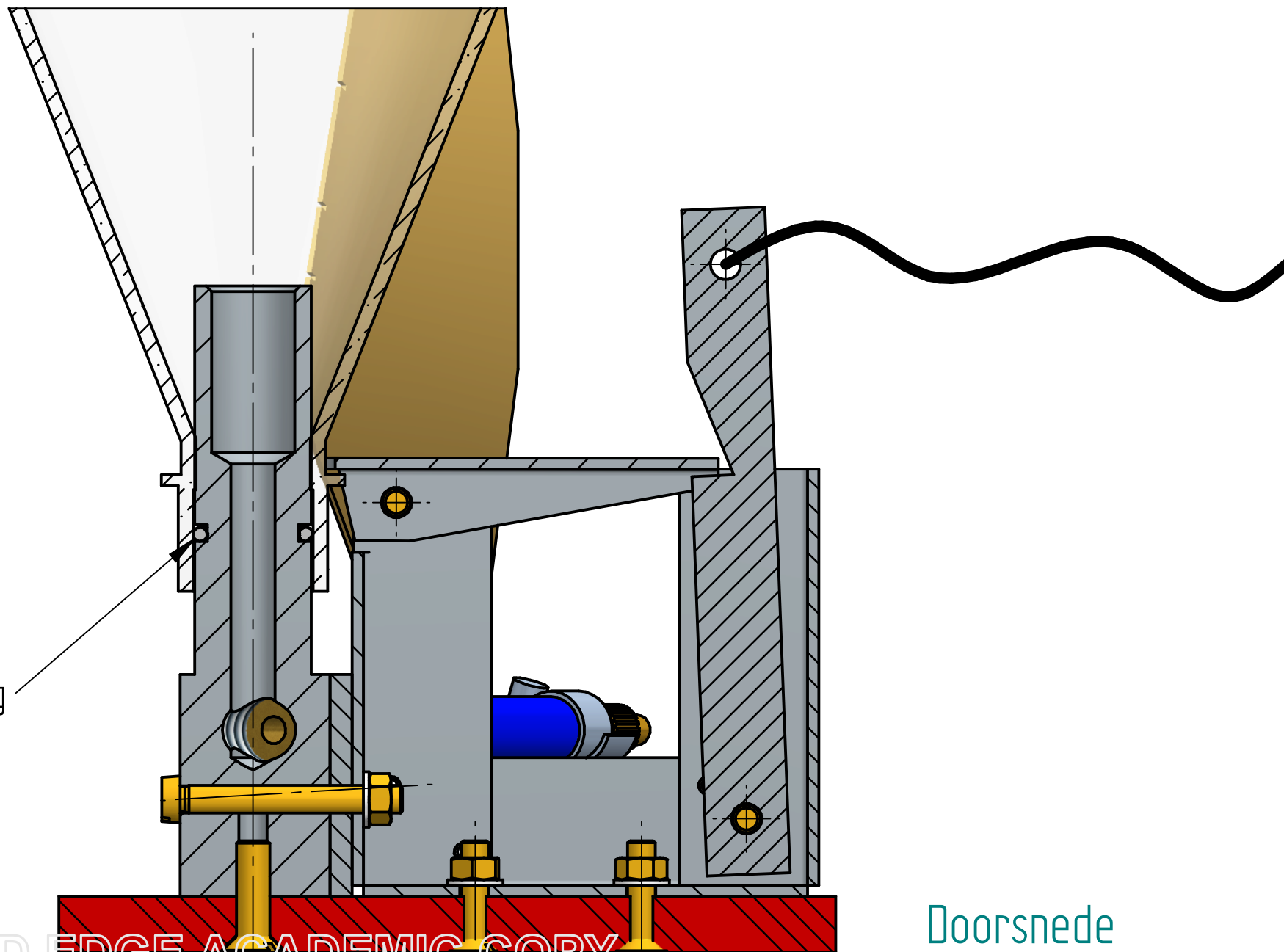


SOLID EDGE ACADEMIC COPY

O-ring

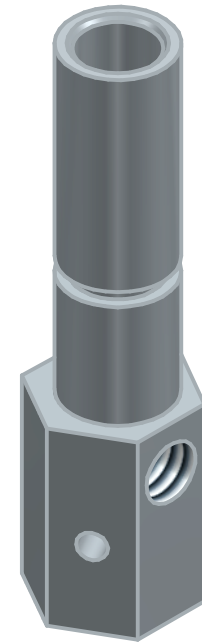
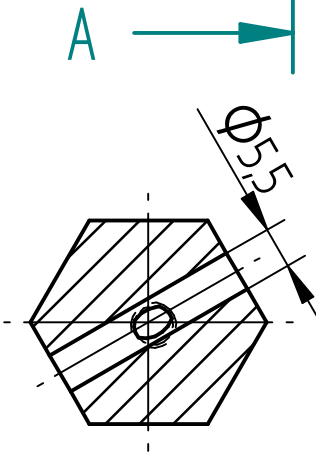
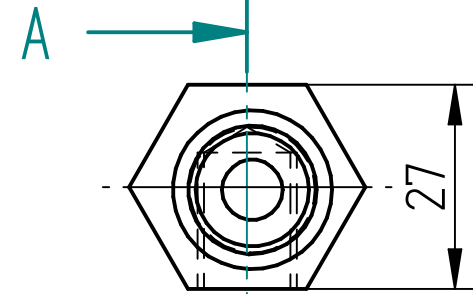
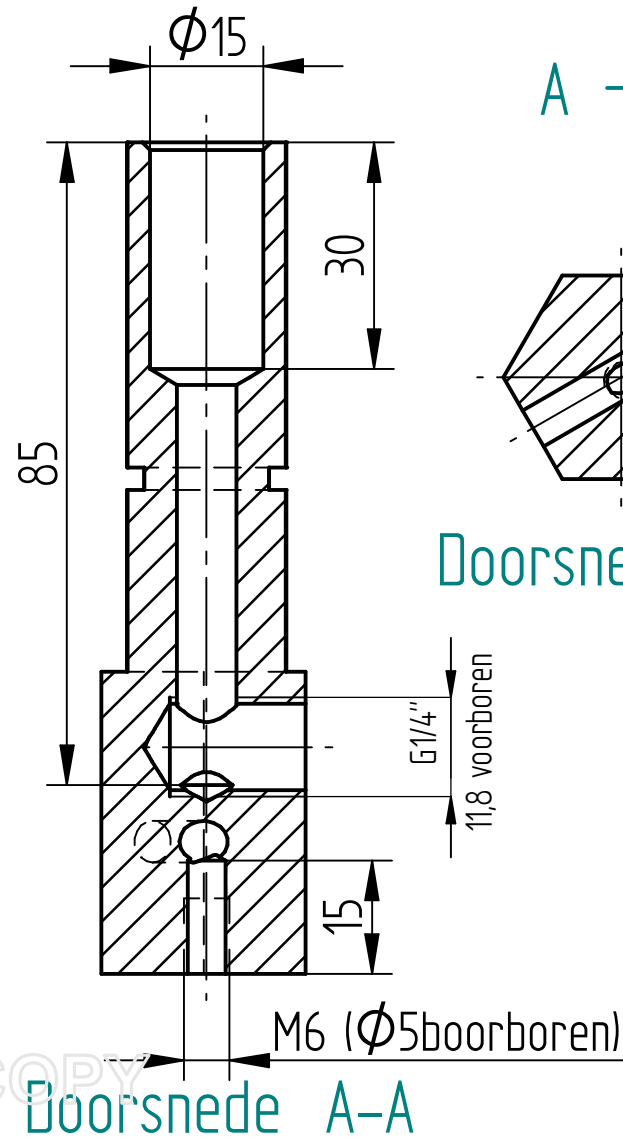
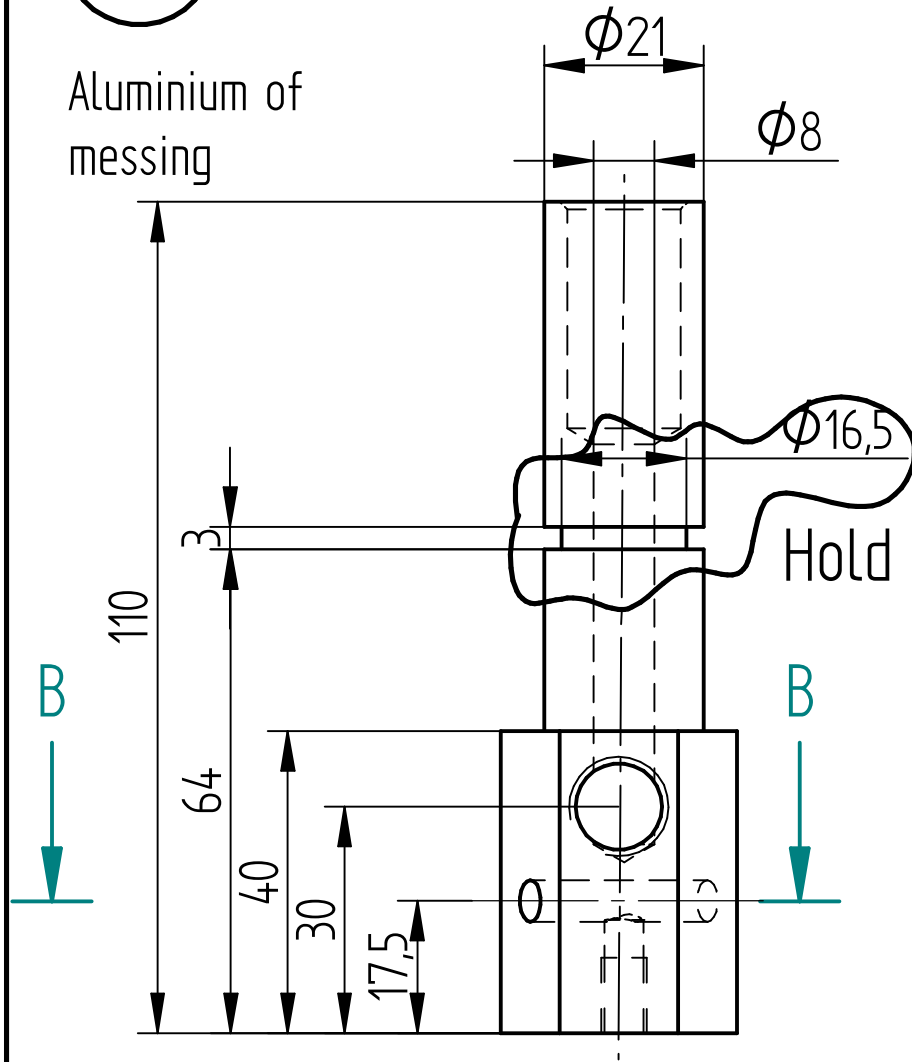
SOLID EDGE ACADEMIC COPY

Doorsnede



1

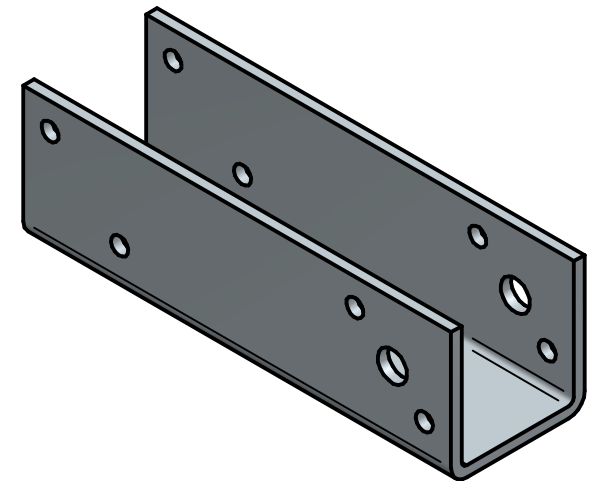
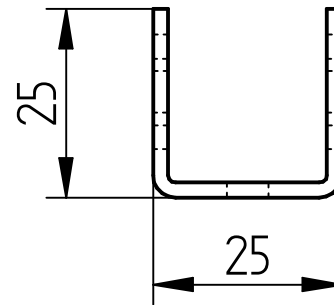
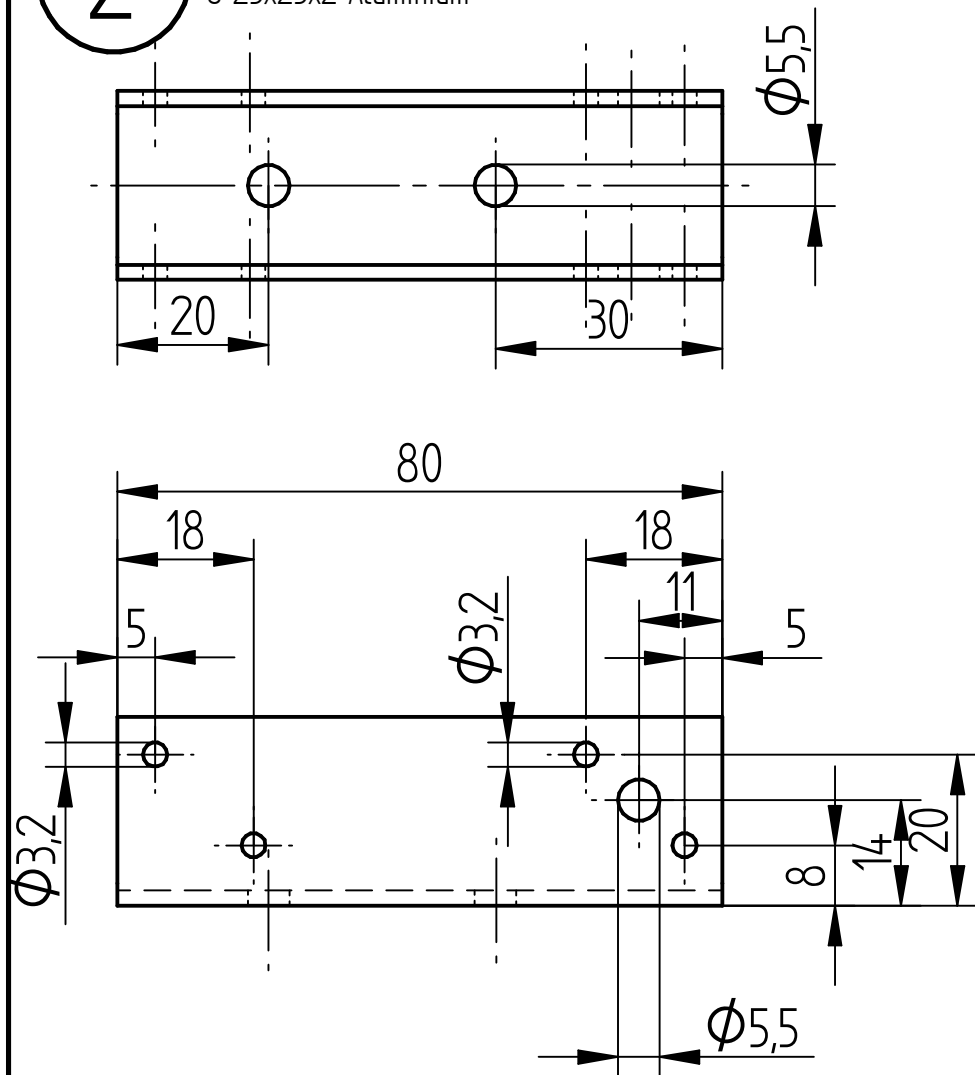
Aluminium of  
messing



SOLID EDGE ACADEMIC COPY

2

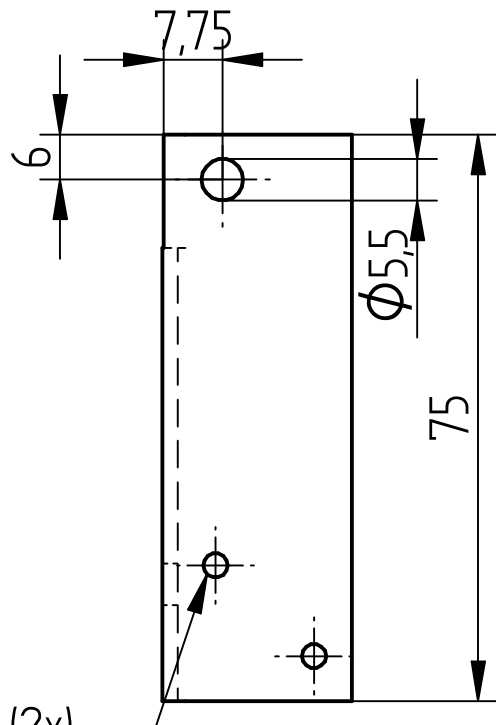
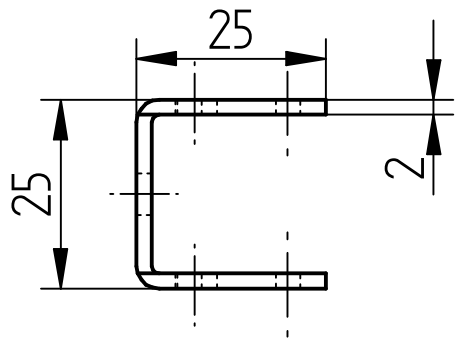
U 25x25x2 Aluminium



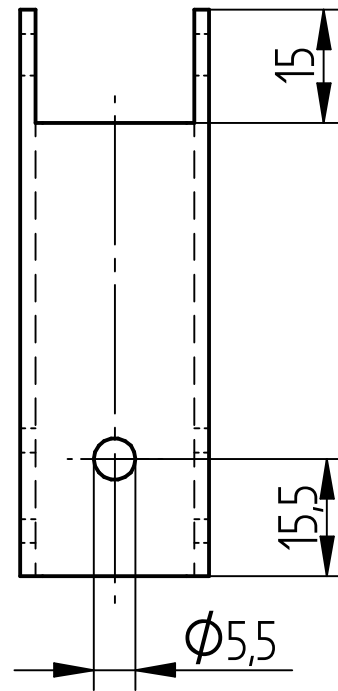
SOLID EDGE ACADEMIC COPY

3

U 25x25x2  
Aluminium



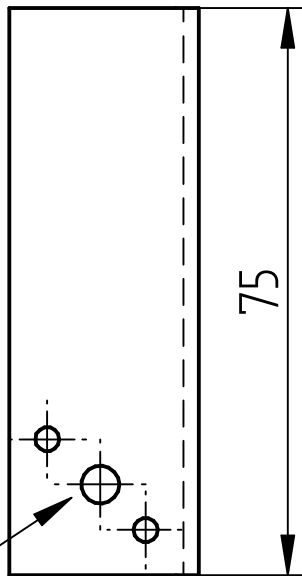
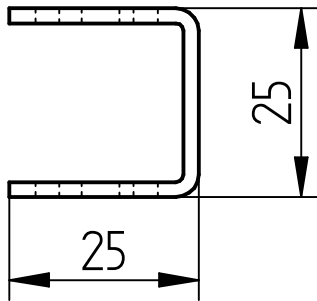
gaten (2x)  
overnemen  
van stuk nr 2



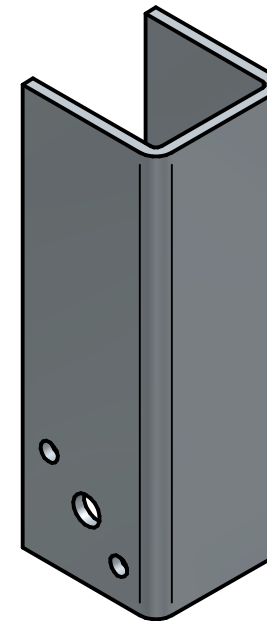
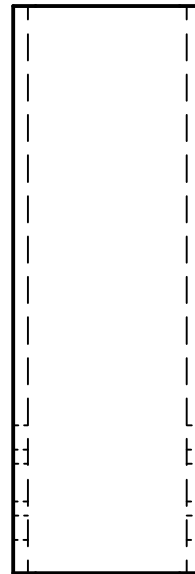
SOLID EDGE ACADEMIC COPY

4

U 25x25x2 Aluminium



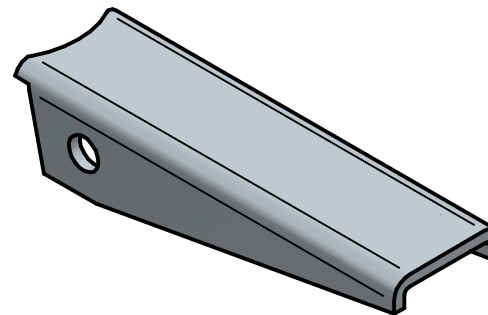
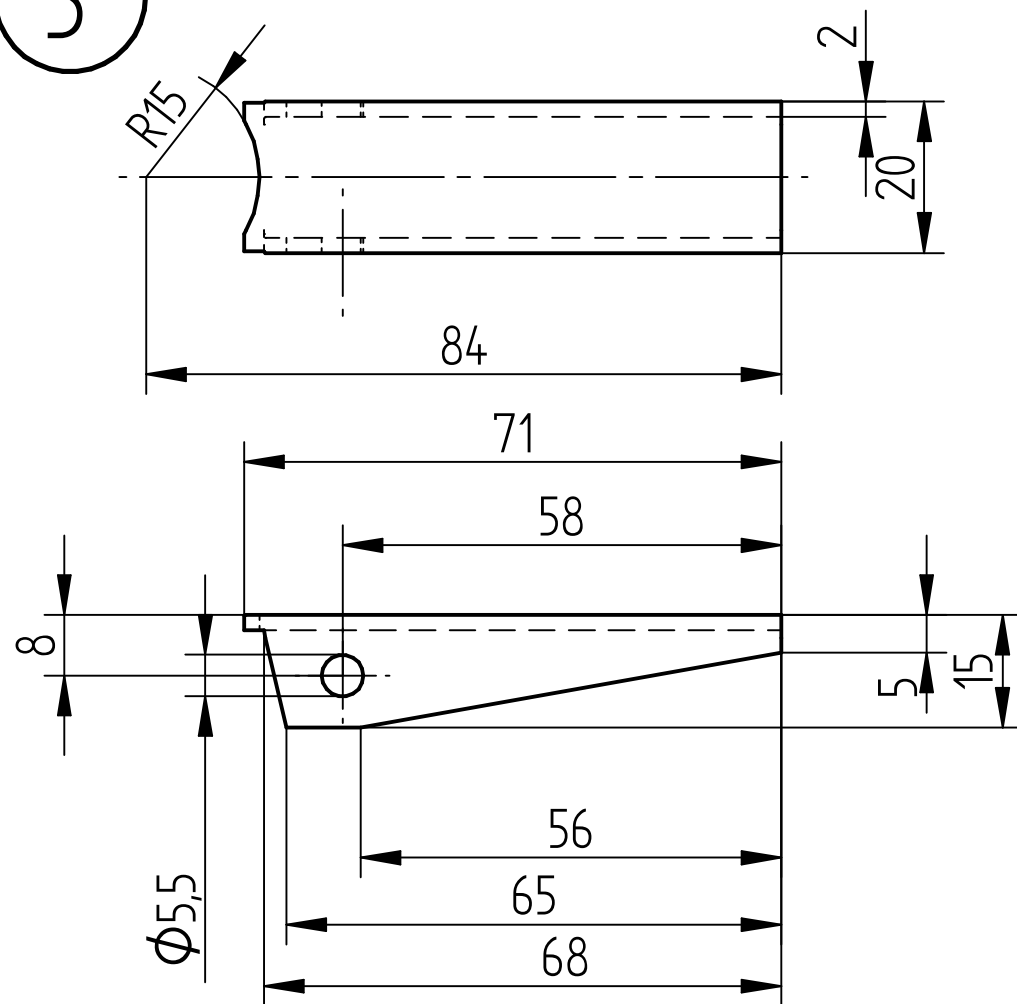
gaten (3x)  
overnemen  
van stuk nr 2



SOLID EDGE ACADEMIC COPY

5

U 20x20x2 Aluminium

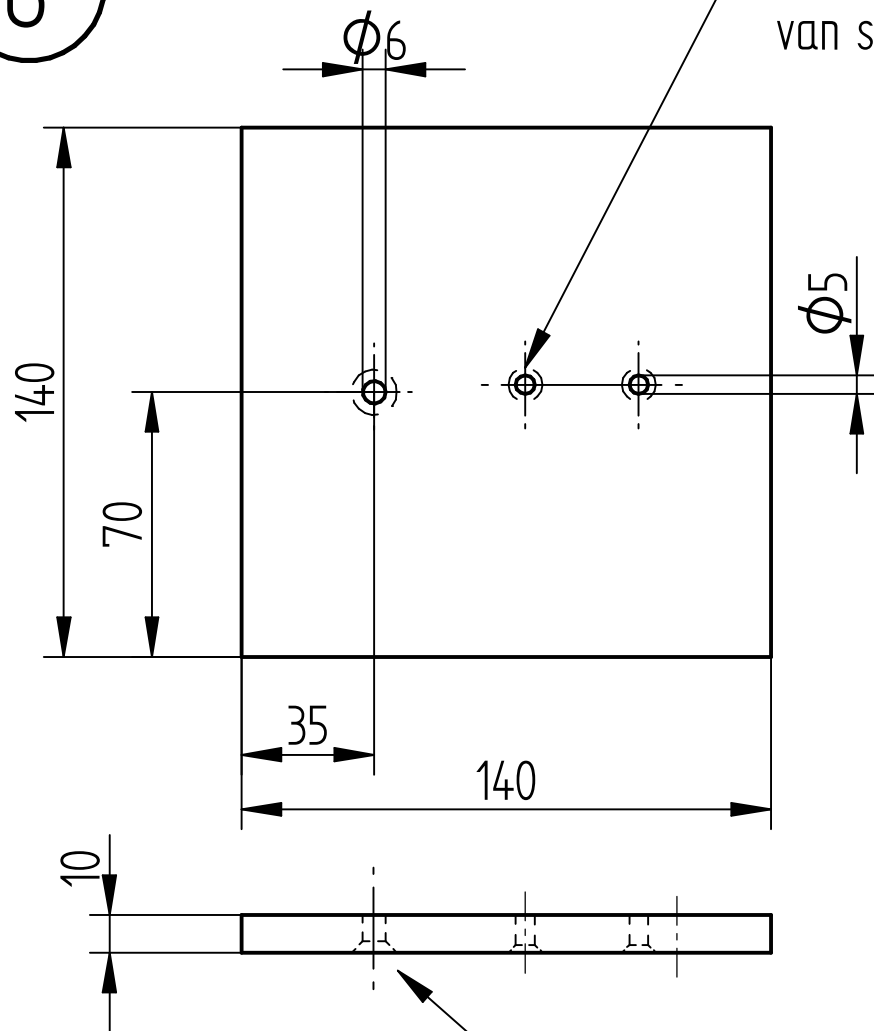


SOLID EDGE ACADEMIC COPY

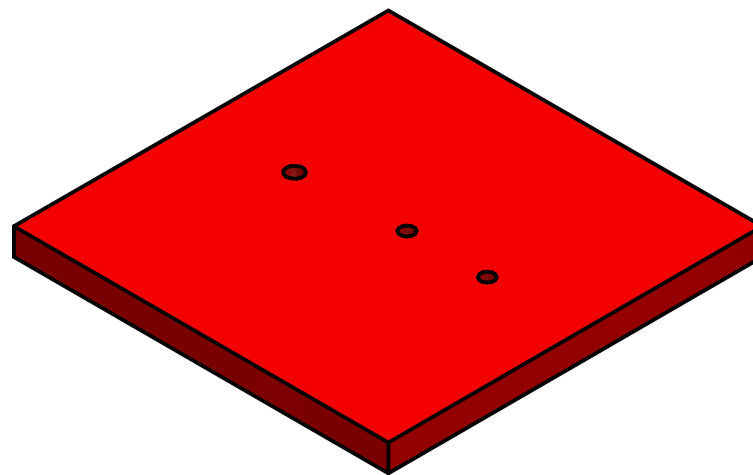
6

Trespa 10 of 12 mm dik

gaten (2x)  
overnemen  
van stuk nr 2



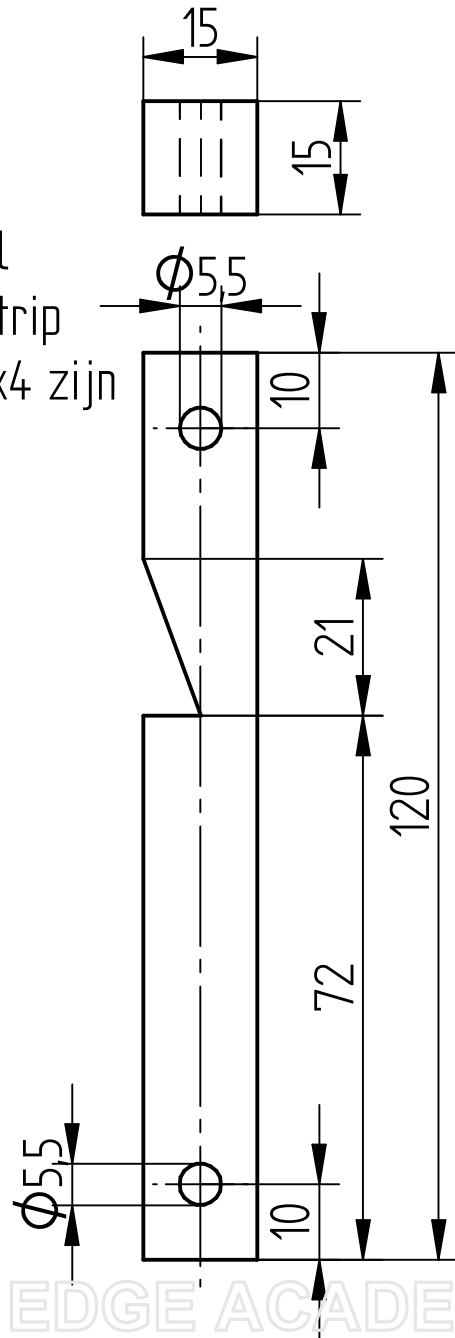
gaten schuin  
verzinken (3x)





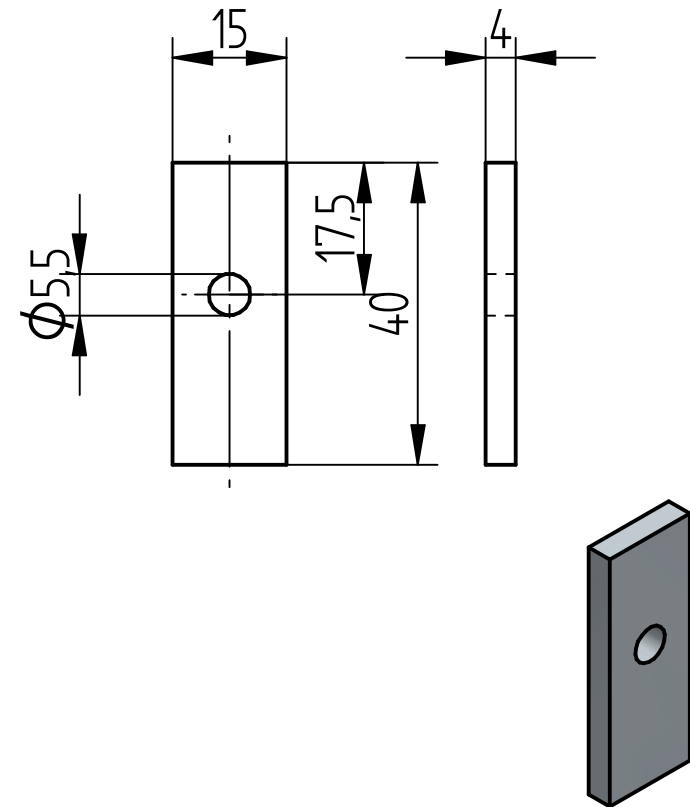
7

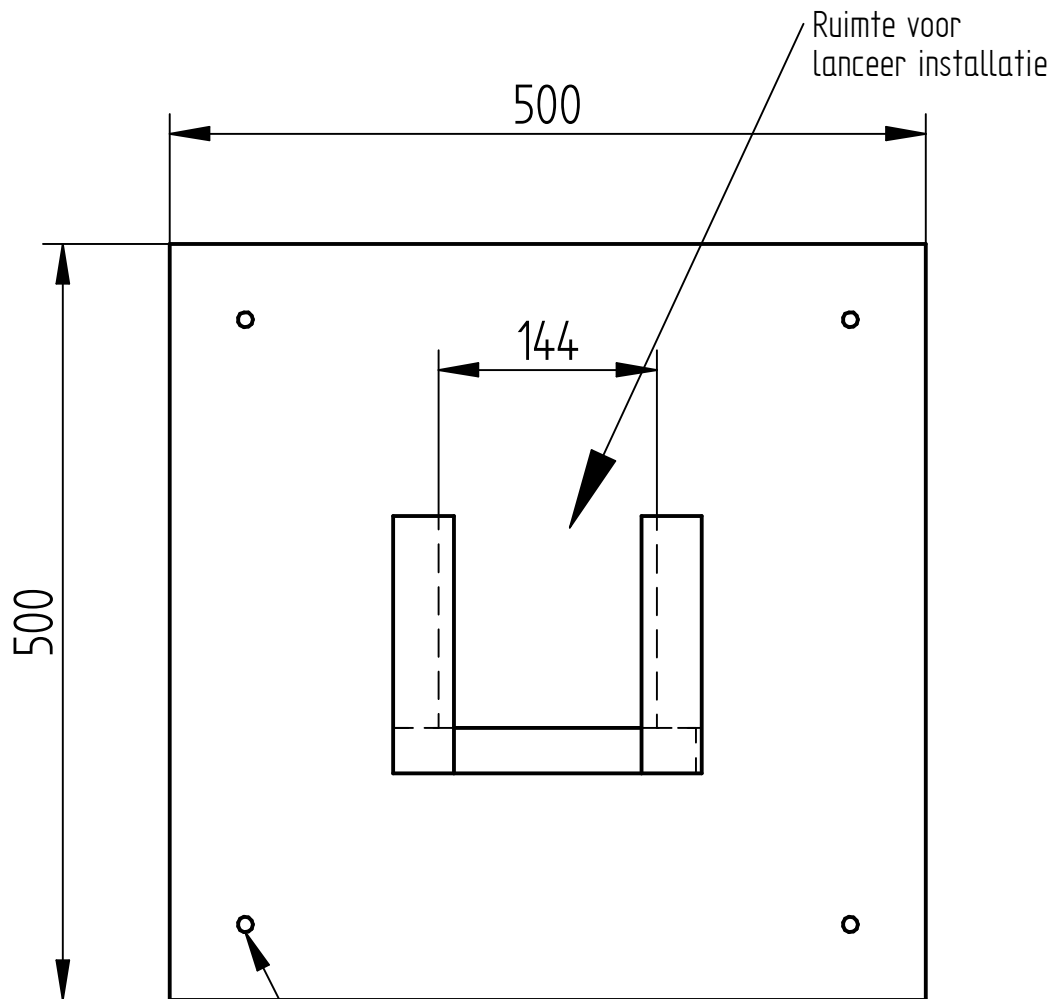
15x15 staal  
mag ook strip  
15x3 of 15x4 zijn



8

15x4 strip staal

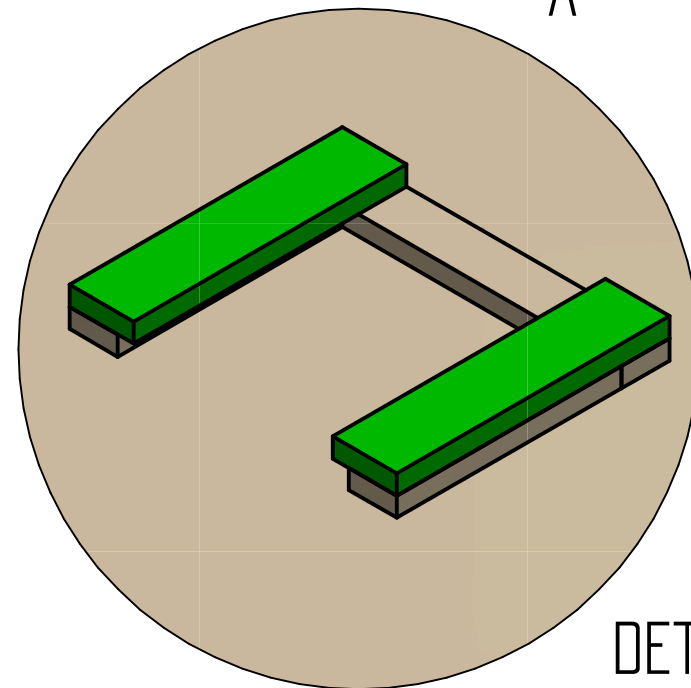
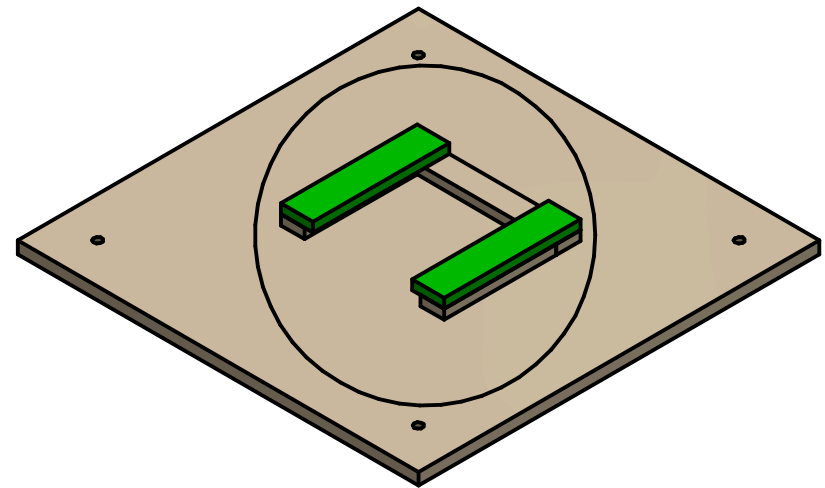


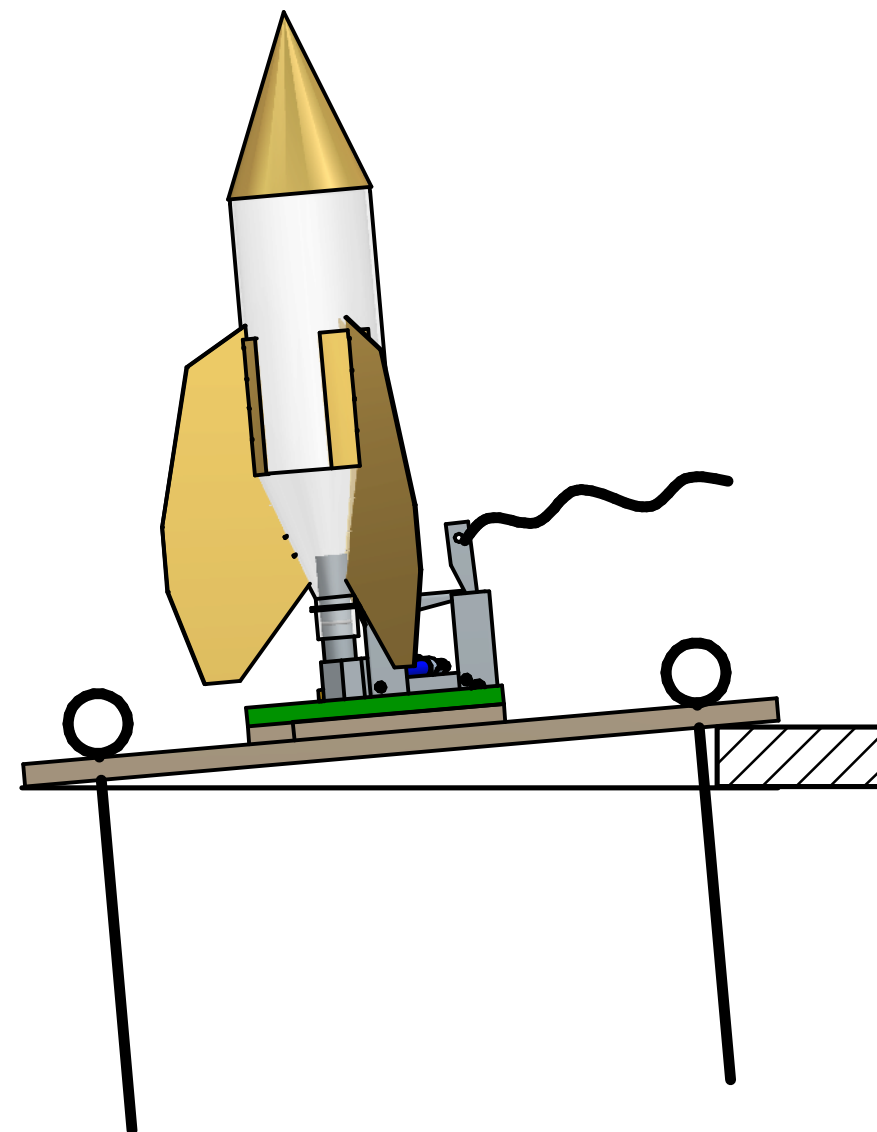
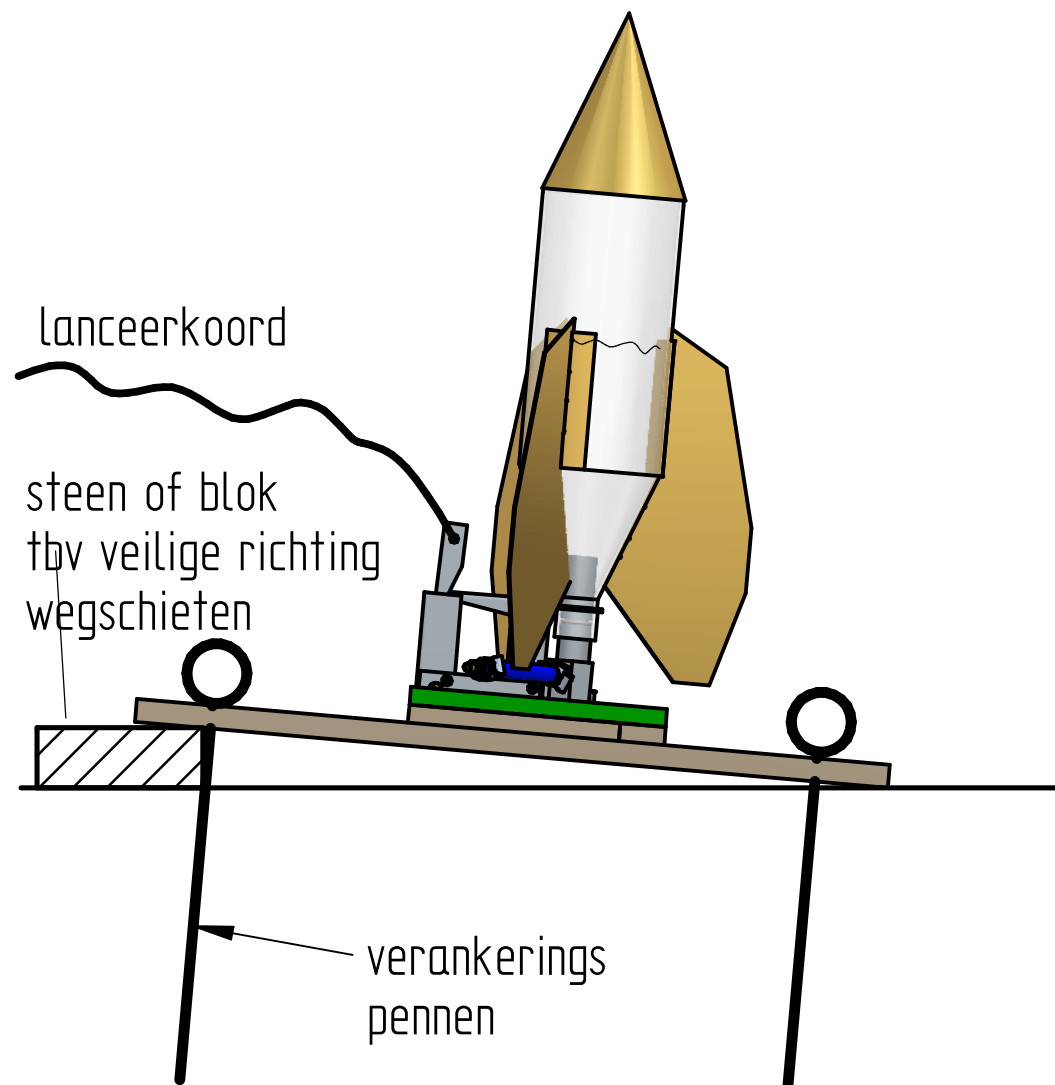


Gaten om  
lanceer platform  
vast aan grond te  
zetten

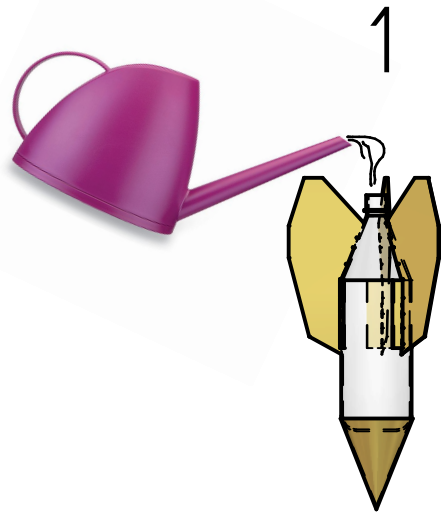
12 of 14 mm  
triplex

Lanceerplatform waterraket



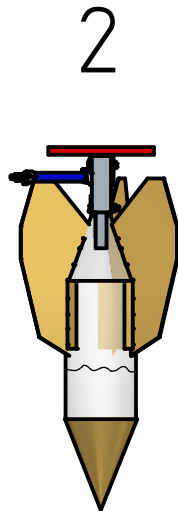


Lanceerplatform compleet



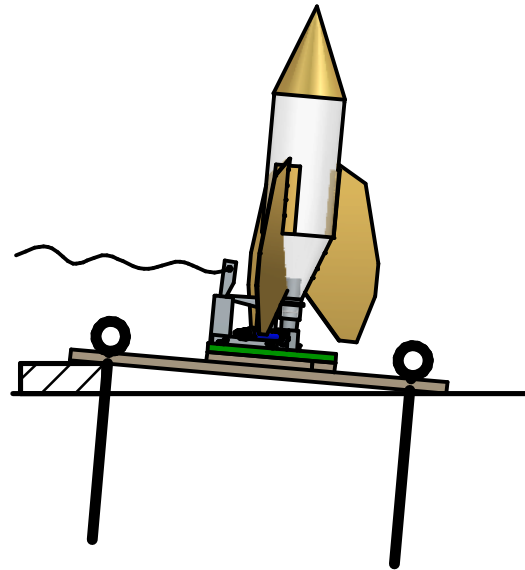
1

Fles vullen met water



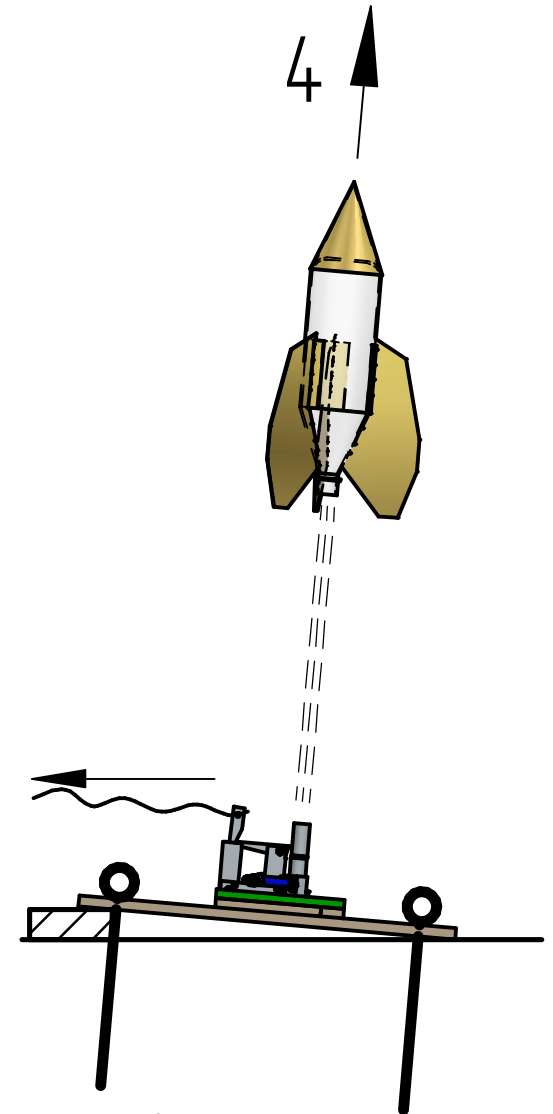
2

Lanceer nippel  
in fles



3

- Lanceer deel op platform zetten.
- Afvuurpal op scherp zetten.
- Luchtdruk op fles zetten.



4

Lanceren

Afvoeren stappenplan